

BXUV.U609 - Fire-resistance Ratings - ANSI/UL 263



Design/System/Construction/Assembly Usage Disclaimer

- Authorities Having Jurisdiction should be consulted in all cases as to the particular requirements covering the installation and use of UL Certified products, equipment, system, devices, and materials.
- Authorities Having Jurisdiction should be consulted before construction.
- Fire resistance assemblies and products are developed by the design submitter and have been investigated by UL for compliance with applicable requirements. The published information cannot always address every construction nuance encountered in the field.
- When field issues arise, it is recommended the first contact for assistance be the technical service staff provided by the product manufacturer noted for the design. Users of fire resistance assemblies are advised to consult the general Guide Information for each product category and each group of assemblies. The Guide Information includes specifics concerning alternate materials and alternate methods of construction.
- Only products which bear UL's Mark are considered Certified.

BXUV - Fire Resistance Ratings - ANSI/UL 263 Certified for United States

BXUV7 - Fire Resistance Ratings - CAN/ULC-S101 Certified for Canada

[See General Information for Fire-resistance Ratings - ANSI/UL 263 Certified for United States Design Criteria and Allowable Variances](#)

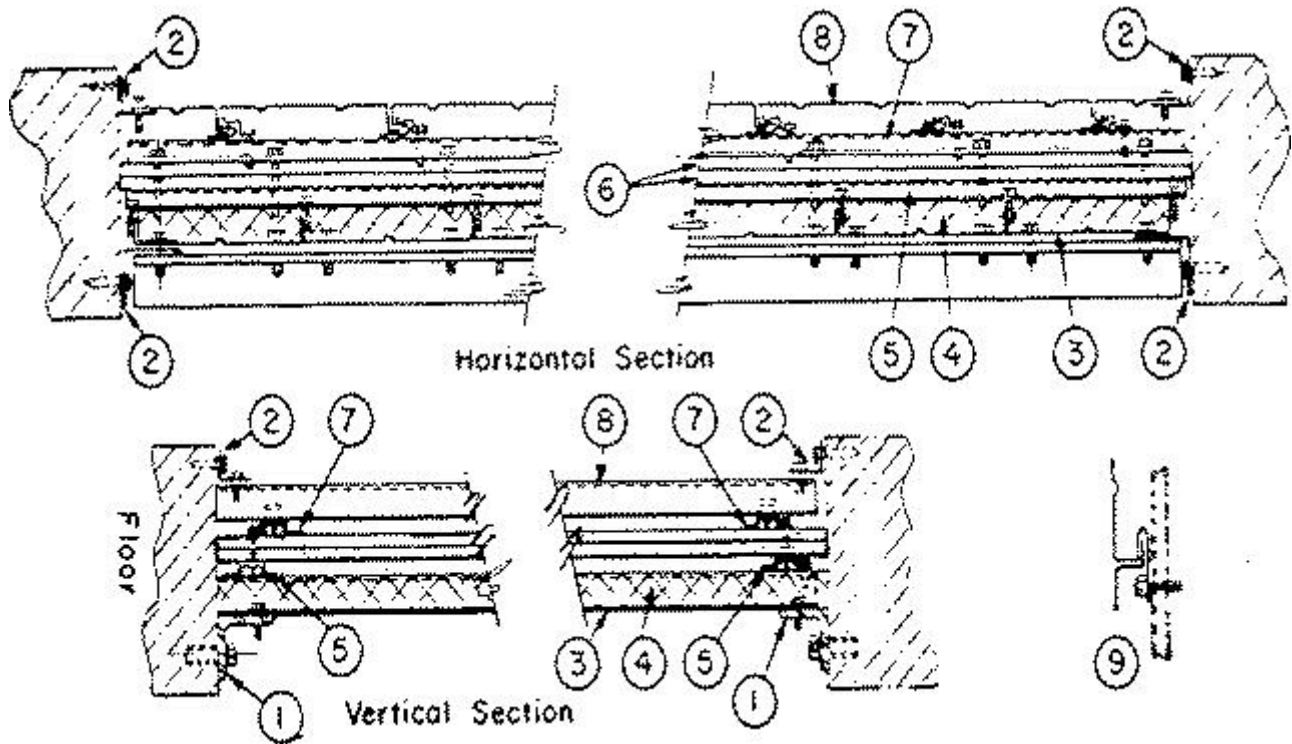
[See General Information for Fire Resistance Ratings - CAN/ULC-S101 Certified for Canada Design Criteria and Allowable Variances](#)

Design No. U609

October 08, 2020

Nonbearing Wall Rating – 1 HR.

*** Indicates such products shall bear the UL or cUL Certification Mark for jurisdictions employing the UL or cUL Certification (such as Canada), respectively.**



1. **Supporting Angles** — 3 by 3 by 3/8 in. supporting angles attached to masonry with 3/8 in. diam by 1 1/2 in. long hex head steel machine bolts with steel washers and 2 1/8 in. long steel inserts spaced 18 in. OC.

2. **Flashing Angles** — 13/8 by 25/8 in., 20 MSG metal coated steel, 13/8 in. leg attached to masonry or wall with 1/4-in. diam 13/4 in. long steel masonry nails spaced 18 in. OC.

3. **Wall and Partition Facings and Accessories* — Steel Liner Units** — Min 20 MSG. 12, 16 or 24 in. wide steel liner panels of various shapes forming the interior side of the wall, attached to top and bottom supporting angles with No. 14 by 1 in. long hex head steel screws located 1 in. from the edges for 12 in. wide liners and at the midpoint and 1 in. from the edges for 16 and 24 in. wide units. The standing side joints of adjacent liner units button-punched vertically 24 in. OC, or screw-attached 48 in. OC.

METAL SALES MANUFACTURING CORPORATION — Types TL-19A, TL-19B, TL-20, TL-21, TL-17, TL-18.

4. **Batts and Blankets*** — 1-1/2 in. min thick mineral wool or glass fiber batts. Installed in liner and/or fascia cavity with horizontal joints in adjacent cavities staggered.

CERTAINTED CORP

JOHNS MANVILLE

KNAUF INSULATION LLC

MANSON INSULATION INC

ROCKWOOL — Type AFB, min. density 1.69 pcf / 27.0 kg/m³

THERMAFIBER INC — Type SAFB, SAFB FF

5. **Sub-girts** — Hat-shaped, min 9/32 in. deep by 2-9/16 in. wide with 13/16 in. legs, No. 16 MSG metal coated steel attached to lips of liner units along the upper leg of the sub-girts with No. 12 by 3/4 in. long hex head sheet metal screws. Sub-girts spaced vertically not more than 48 in. OC with top and bottom sub-girts located not more than 3 in. from supporting angles.

6. Gypsum Board* — 5/8 in. thick by 48 in. wide sheets, two layers applied vertically, vertical and horizontal joints between adjacent layers staggered. First layer attached to sub-girts with 1-5/8 in. long Type S-12 bugle head steel screws. Second layer attached to first with 1-1/2 in. long Type G-10 double lead bugle head steel screws spaced 24 in. OC vertically. Screws located alternately 10 in. from the vertical edges for the first layer and 9 in. from the vertical edges for the second layer.
AMERICAN GYPSUM CO — Type AG-C

CABOT MANUFACTURING ULC — Type X, 5/8 Type X, Type Blueglass Exterior Sheathing

CGC INC — Types IP-X1, SCX, SHX, ULX, USGX, WRX.

CERTAINTED GYPSUM INC — Types LGFC6A, LGFC-C/A.

GEORGIA-PACIFIC GYPSUM L L C — Types TG-C, Type X, Veneer Plaster Base - Type X, Water Rated - Type X, Sheathing - Type X, Soffit - Type X, GreenGlass Type X, Type X ComfortGuard Sound Deadening Gypsum Board, Type LWX, Veneer Plaster Base-Type LWX, Water Rated-Type LWX, Sheathing Type-LWX, Soffit-Type LWX, Type DGLW, Water Rated-Type DGLW, Sheathing Type- DGLW, Soffit-Type DGLW, Type LW2X, Veneer Plaster Base - Type LW2X, Water Rated - Type LW2X, Sheathing - Type LW2X, Soffit - Type LW2X, Type DGL2W, Water Rated - Type DGL2W, Sheathing - Type DGL2W, Type DGG, Type DAP, Type DS.

NATIONAL GYPSUM CO — Riyadh, Saudi Arabia — Type FR, or WR.

PABCO BUILDING PRODUCTS L L C, DBA PABCO GYPSUM — Types PG-11, PGS-WRS, PGI

PANEL REY S A — Types GREX, GRIX, PRX, RHX, MDX, ETX.

UNITED STATES GYPSUM CO — Types FRX-G, IP-X1, SCX, SHX, ULX, WRX, USGX, ULIX

USG BORAL DRYWALL SFZ LLC — Type SCX, USGX

USG MEXICO S A DE C V — Types IP-X1, SCX, SHX, ULX, USGX or WRX.

6A. Gypsum Board* — (As an alternate to 5/8 in. thick wallboard in Item 6) — Nom 3/4 in. thick, 48 in. wide, installed as described in Item 6.

CGC INC — Type AR.

UNITED STATES GYPSUM CO — Type AR.

USG MEXICO S A DE C V — Type AR.

6B. Gypsum Board* — (As an alternate to Items 6 and 6A) Nominal 5/8 in. thick, 4 ft wide panels, secured as described in Item 6.

PABCO BUILDING PRODUCTS L L C, DBA PABCO GYPSUM — Type QuietRock ES.

6C. Wall and Partition Facings and Accessories* — (As an alternate to Items 6 through 6B) — Composite Gypsum Panel — Nominal 5/8 in. thick, 4 ft wide panels, secured as described in Item 6.

PABCO BUILDING PRODUCTS L L C, DBA PABCO GYPSUM — Type QuietRock QR-527.

7. **Sub-girts** — Hat-shaped, min 9/32 in. deep by 2 9/16 in. wide with 7/16 in. legs, 18 MSG metal coated steel placed over wallboard with one leg located in line with the sub-girts on the opposite side and attached through the wallboard to the first set of sub-girts with No. 14 by 2 1/2 in. long hex head steel screws spaced horizontally 12 in. OC.

8. **Wall and Partition Facings and Accessories* — Facing Units** — Steel face units, min. 20 MSG, of various shapes supplied in 12 to 42 in. widths. The 12 in. wide units are attached to sub-girts with V-shaped 18 MSG coated spring steel clips hooked over the lip of the facing unit and screw attached to the sub-girt with No. 14 by 3/4 in. hex head self-tapping steel screws. Alternately attached to sub-girt with L-shaped 18 MSG coated spring steel clips hooked over standing lip of facing unit and screw attached to sub-girt with No. 14 by 3/4 in. long hex head self-tapping steel screws, standing joints then button-punched vertically 24 in. OC; or attached directly to sub-girts with No. 14 by 1 in. steel screws spaced a max of 10 in. OC horizontally.

METAL SALES MANUFACTURING CORPORATION — Types T-2, T-3, T-4, T-5, T-6, T-6A, T-7, T-7A, T-8, T-8 Modified, T-9, T-11, T-12, T-10A, T-10B, T-10C, T-10D, T-10E, TL17, TL-17A, TL-17B, TL-17C, TL-17D, TL-18, TL-1222, TL-1251, TDR-6, TDR-9, TDR-12, T-13, T-14, T-15, T-23, T-24, T-25, T-26, B-Type, and B-Type Modified.

9. **Alternate Facing Unit Attachment Detail** — Alternately, female lip of face panel attached to sub-girt with No. 14 by 3/4 in. steel screws.

*** Indicates such products shall bear the UL or cUL Certification Mark for jurisdictions employing the UL or cUL Certification (such as Canada), respectively.**

Last Updated on 2020-10-08

La presencia del nombre de una empresa o producto en esta base de datos no garantiza por sí misma que los productos así identificados hayan sido fabricados bajo el servicio de seguimiento de UL. Solo aquellos productos que lleven la marca UL deben considerarse como certificados y garantizados bajo el servicio de seguimiento de UL. Busque siempre la marca en el producto.

UL permite la reproducción del material contenido en el directorio de certificación en línea sujeta a las siguientes condiciones: 1. La información de la guía, las ensamblajes, las construcciones, los diseños, los sistemas y/o certificaciones (archivos) deben presentarse en su totalidad y de forma no engañosa, sin ninguna manipulación en los datos (o dibujos). 2. Debe aparecer la declaración "Reimpreso desde el directorio de certificaciones en línea con permiso de UL" junto al material extraído. Además, el material reimpreso debe incluir una nota de derechos de autor en el siguiente formato: "© 2021 UL LLC"