

BXUV.U379 - Fire-resistance Ratings - ANSI/UL 263



Design/System/Construction/Assembly Usage Disclaimer

- Authorities Having Jurisdiction should be consulted in all cases as to the particular requirements covering the installation and use of UL Certified products, equipment, system, devices, and materials.
- Authorities Having Jurisdiction should be consulted before construction.
- Fire resistance assemblies and products are developed by the design submitter and have been investigated by UL for compliance with applicable requirements. The published information cannot always address every construction nuance encountered in the field.
- When field issues arise, it is recommended the first contact for assistance be the technical service staff provided by the product manufacturer noted for the design. Users of fire resistance assemblies are advised to consult the general Guide Information for each product category and each group of assemblies. The Guide Information includes specifics concerning alternate materials and alternate methods of construction.
- Only products which bear UL's Mark are considered Certified.

BXUV - Fire Resistance Ratings - ANSI/UL 263 Certified for United States

BXUV7 - Fire Resistance Ratings - CAN/ULC-S101 Certified for Canada

[See General Information for Fire-resistance Ratings - ANSI/UL 263 Certified for United States Design Criteria and Allowable Variances](#)

[See General Information for Fire Resistance Ratings - CAN/ULC-S101 Certified for Canada Design Criteria and Allowable Variances](#)

Design No. U379

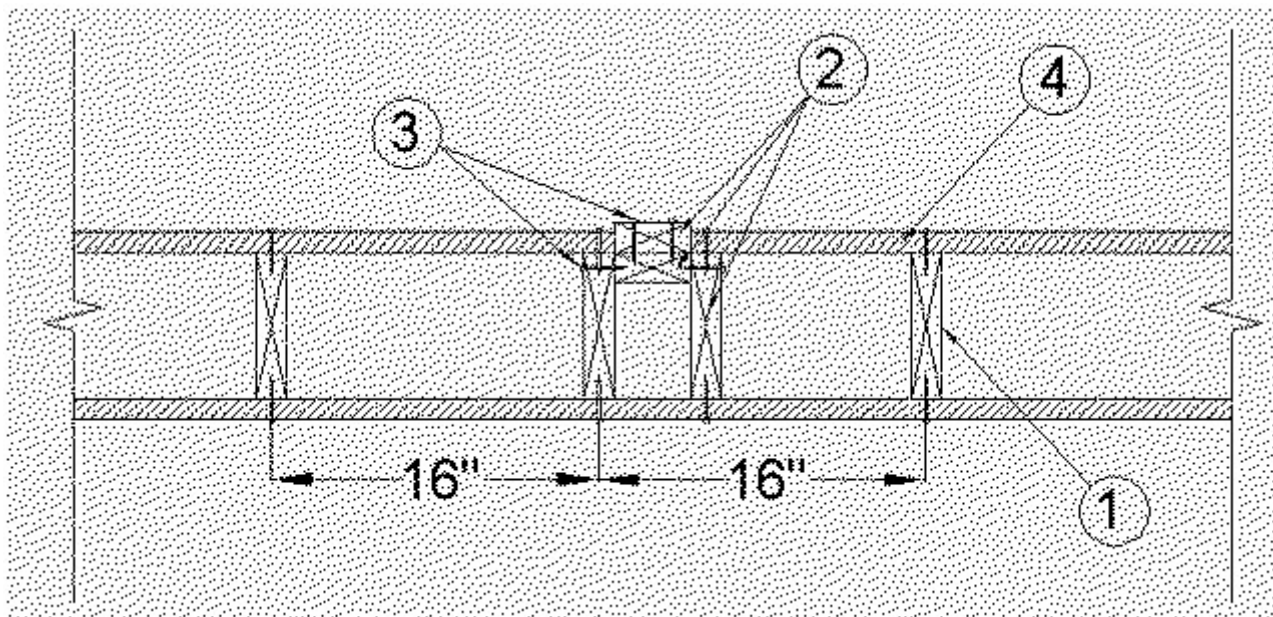
October 07, 2020

Bearing Wall Rating — 1 HR.

Finish Rating — See Item 4.

This design was evaluated using a load design method other than the Limit States Design Method (e.g., Working Stress Design Method). For jurisdictions employing the Limit States Design Method, such as Canada, a load restriction factor shall be used — See Guide [BXUV](#) or [BXUV7](#)

*** Indicates such products shall bear the UL or cUL Certification Mark for jurisdictions employing the UL or cUL Certification (such as Canada), respectively.**



1. Wood Studs — Minimum nominal 2 by 6 in. spaced 16 in. OC max, effectively braced.

1A. Wood Studs — (Item Not Shown - For Use With Items 4D and 4E Only) - Minimum nominal 2 by 6 in. spaced 24 in. OC max, effectively braced.

2. Non-Bearing Wall Partition Intersection — Minimum nominal 2 by 4 in. studs nailed together and fastened to one side of the minimum 2 by 6 in. stud. Intersection between 2 by 4 in. studs to be flush with 2 by 6 in. stud. 2 by 4 in. double stud framed with a second 2 by 6 in. stud. Maximum one non-bearing intersection per stud cavity. Non-bearing wall partition stud depth shall be at least equal to the depth of the bearing wall.

3. Fasteners — (For non-bearing wall intersection) Nom. 2 by 4 in. studs nailed together with two 3 in. long, 10d nails spaced 16 in. OC vertically. Nom. 2 by 4 in. studs nailed to 2 by 6 in. studs with 3 in. long, 10d nails spaced 16 in. OC vertically.

4. Gypsum Board* — 5/8 in. thick paper, glass mat or vinyl surfaced, with beveled, square, or tapered edges, applied either horizontally or vertically. When used in widths other than 48 in., gypsum panels are to be installed horizontally. Gypsum panels nailed 7 in. OC with 6d nails 1-7/8 in. long, 0.0915 in. shank diam and 15/64 in. diam heads. As an alternate to nails, gypsum panels may be fastened to studs with 1-5/8 in. long wallboard screws spaced 8 in. OC max, with last screw 1 in. from edge of board.

AMERICAN GYPSUM CO — Types AGX-1 (finish rating 23 min.), M-Glass (finish rating 23 min.), AGX-11 (finish rating 26 min), AG-C, LightRoc (finish rating 23 min.)

BEIJING NEW BUILDING MATERIALS PUBLIC LTD CO — Type DBX-1 (finish rating 24 min).

CABOT MANUFACTURING ULC — Type X (finish rating 22 min.), 5/8 Type X, Moisture Resistant Type X, Gypsum Sheathing Type X, Mold & Mildew Resistant Type X and Mold & Mildew Resistant AR Type X, Type Blueglass Exterior Sheathing

CGC INC — Type AR (finish rating 24 min), Type C (finish rating 24 min), Type IP-AR (finish rating 24 min), Type IPC-AR (finish rating 24 min), Type IP-X1 (finish rating 24 min), Type IP-X2 (finish rating 24 min), Type SCX (finish rating 24 min), Type SHX (finish rating 24 min), Type ULIX (Finish rating 20 min.), Type ULX (finish rating 22 min), USGX (Joint tape and compound, Item 5, optional for use with Type USGX), Type WRC (finish rating 24 min), Type WRX (finish rating 24 min).

CERTAINTED GYPSUM INC — Type C, Type X, or Type X-1 (finish rating 26 min); Type EGRG or GlasRoc (finish rating 23 min)

CERTAINTED GYPSUM INC — Type LGFC6A (finish rating 34 min), Type LGFC2A, Type LGFC-C/A, Type LGFC-WD.

GEORGIA-PACIFIC GYPSUM L L C — Type 5 (finish rating 26 min), Type 6 (finish rating 23 min), Type 9 (finish rating 26 min), Type C (finish rating 26 min), Type DGG (finish rating 20 min), Type GPFS1 (finish rating 20 min), Type GPFS2 (finish rating 20 min), Type GPFS6 (finish rating 26 min), Type DS, Type DAP, Type DD (finish rating 20 min), Type DA, Type DAPC, LS (finish rating 23 min), Type X, Veneer Plaster Base - Type X, Water Rated - Type X, Sheathing - Type X, Soffit - Type X, GreenGlass Type X, Type LWX, Veneer Plaster Base-Type LWX, Water Rated-Type LWX, Sheathing Type-LWX, Soffit-Type LWX, Type DGLW, Water Rated-Type DGLW, Sheathing Type-DGLW, Soffit-Type DGLW, Type LW2X, Veneer Plaster Base - Type LW2X, Water Rated - Type LW2X, Sheathing - Type LW2X, Soffit - Type LW2X, Type DGL2W, Water Rated - Type DGL2W, Sheathing - Type DGL2W.

NATIONAL GYPSUM CO — Type FSK (finish rating 20 min), Type FSK-G (finish rating 20 min), Type FSW (finish rating 20 min), Type FSW-2 (finish rating 24 min), Type FSW-3 (finish rating 20 min), Type FSW-5 (finish rating 22 min), Type FSW-6 (finish rating 20 min), Type FSW-8, Type FSW-G (finish rating 20 min), Type FSK-C (finish rating 20 min), Type FSW-C (finish rating 20 min), Type FSMR-C, Type FSL (finish rating 24 min).

PABCO BUILDING PRODUCTS L L C, DBA PABCO GYPSUM — Types C, PG-2 (finish rating 20 min), PG-3 (finish rating 20 min), Types PG-3W, PG-5W (finish rating 20 min), Type PG-4 (finish rating 20 min), Type PG-6 (finish rating 23 min), Types PG-3WS, PG-5WS (finish rating 20 min), Types PG-5, PG-9 (finish rating 26 min), PG-11, Type PG-C, PGS-WRS, PGI.

PANEL REY S A — Types GREX, GRIX, PRX, RHX, MDX, ETX.

SIAM GYPSUM INDUSTRY (SARABURI) CO LTD — Type EX-1 (finish rating 26 min)

THAI GYPSUM PRODUCTS PCL — Type C or Type X

UNITED STATES GYPSUM CO — Type AR (finish rating 24 min), Type C (finish rating 24 min), Type FRX-G (finish rating 29 min), Type IP-AR (finish rating 24 min), Type IPC-AR (finish rating 24 min), Type IP-X1 (finish rating 24 min), Type IP-X2 (finish rating 24 min), Type SCX (finish rating 24 min), Type SHX (finish rating 24 min), Type ULIX (Finish rating 20 min.), Type ULX (finish rating 22 min), USGX (Joint tape and compound, Item 5, optional for use with Type USGX), Type WRX (finish rating 24 min), Type WRC (finish rating 24 min).

USG BORAL DRYWALL SFZ LLC — Types C, SCX, USGX (Joint tape and compound, Item 5, optional for use with Type USGX)

USG MEXICO S A DE C V — Type AR (finish rating 24 min), Type C (finish rating 24 min), Type WRX (finish rating 24 min), Type WRC (finish rating 24 min), Type IP-X1 (finish rating 24 min), Type IP-X2 (finish rating 24 min), Type SHX (finish rating 24 min), SCX (finish rating 24 min), Type IP-AR (finish rating 24 min), Type IPC-AR (finish rating 24 min), Type ULX (finish rating 22 min), USGX (Joint tape and compound, Item 5, optional for use with Type USGX).

4A. Gypsum Board* — (As an alternate to Item 4) — 5/8 in. thick gypsum panels, with beveled, square, or tapered edges, applied either horizontally or vertically. Gypsum panels fastened to framing with 1-1/4 in. long Type W coarse thread gypsum panel steel screws spaced a max 8 in. OC, with last screw 1 in. from edge of board. When used in widths of other than 48 in., gypsum boards are to be installed horizontally. Finished Rating is 24 minutes.

CGC INC — Type AR, Type C, Type IP-AR, Type IPC-AR, Type IP-X1, Type IP-X2, Type SCX, Type ULX, Type SHX, Type WRC, Type WRX.

UNITED STATES GYPSUM CO — Type AR, Type C, Type FRX-G, Type IP-AR, Type IP-X1, Type IP-X2, Type IPC-AR, Type SCX, Type SHX, Type ULX, Type WRC, Type WRX.

USG BORAL DRYWALL SFZ LLC — Types C, SCX

USG MEXICO S A DE C V — Type AR, Type C, Type WRX, Type WRC, Type IP-X1, Type IP-X2, Type SHX, Type SCX, Type IP-AR, Type IPC-AR, Type ULX.

4B. **Gypsum Board*** — (As an alternate to Item 4, 4A) — Nom 3/4 in. thick, installed with 1-7/8 in. long nails as described in Item 3 or 1-3/8 in. long Type W coarse thread gypsum panel steel screws as described in Item 3A.

CGC INC — Types AR, IP-AR.

UNITED STATES GYPSUM CO — Types AR, IP-AR.

USG MEXICO S A DE C V — Types AR, IP-AR.

4C. **Gypsum Board*** — (As an alternate to Items 4, 4A and 4B) - 5/8 in. thick, 2 ft wide, tongue and groove edge, applied horizontally to one side of the assembly. Installed with 1-7/8 in. long nails as described in Item 3 or 1-1/4 in. long Type W coarse thread gypsum panel steel screws as described in Item 3A. Joint covering (Item 2) not required.

CGC INC — Type SHX.

UNITED STATES GYPSUM CO — Type SHX.

USG MEXICO S A DE C V — Type SHX.

4D. **Gypsum Board** — (As an alternate to Item 4) - 5/8 in. thick, 24 to 54 in. wide. Gypsum boards nailed to studs and bearing plates 7 in. OC with 6d cement coated nails 1-7/8 in. long, 0.0915 in. shank diam and 1/4 in. diam head. When used in widths other than 48 in., gypsum panels to be installed horizontally.

CGC INC — Types AR, IP-AR, IP-X1, SCX, SHX, ULX, WRX.

UNITED STATES GYPSUM CO — Type AR, FRX-G, IP-AR, IP-X1, SCX, SHX, ULX or WRX.

USG BORAL DRYWALL SFZ LLC — Type SCX

USG MEXICO S A DE C V — Type AR, IP-AR, IP-X1, SCX, SHX, ULX, or WRX.

4E. **Gypsum Board*** — (As an alternate to Item 4) — Nom 3/4 in. thick, 4 ft wide, installed as described in Item 4.

CGC INC — Types AR, IP-AR.

UNITED STATES GYPSUM CO — Types AR, IP-AR.

USG MEXICO S A DE C V — Types AR, IP-AR.

4F. **Gypsum Board*** — (As an alternate to Item 4) — 5/8 in. thick gypsum panels, with square edges, applied either horizontally or vertically. Gypsum panels fastened to framing with 1-1/4 in. long Type W coarse thread gypsum panel steel screws spaced a max 8 in. OC, with last 2 screws 1 and 4 in. from edge of board. When used in widths of other than 48 in., gypsum boards are to be installed horizontally.

GEORGIA-PACIFIC GYPSUM L L C — Type DGG, GreenGlass Type X.

4G. **Gypsum Board*** — (As an alternate to Items 4 through 4F) - 5/8 in. thick, 4 ft. wide, paper surfaced applied vertically and secured as described in Item 4.

GEORGIA-PACIFIC GYPSUM L L C — Type X ComfortGuard Sound Deadening Gypsum Board (finish rating 27 min.).

4H. Gypsum Board* — (As an alternate to Items 4 through 4G) - 5/8 in. thick, 4 ft. wide, paper surfaced, applied vertically and secured as described in Item 4.

NATIONAL GYPSUM CO — Type SBWB

4I. Gypsum Board* — (As an alternate to Items 4 through 4H) — Nominal 5/8 in. thick, 4 ft wide panels, applied vertically only and secured as described in Item 4.

PABCO BUILDING PRODUCTS L L C, DBA PABCO GYPSUM — Type QuietRock ES.

4J. Wall and Partition Facings and Accessories* — (As an alternate to Items 4 through 4I) — Nominal 5/8 in. thick, 4 ft wide panels, applied vertically only and secured as described in Item 4.

PABCO BUILDING PRODUCTS L L C, DBA PABCO GYPSUM — Type QuietRock 527.

4K. Gypsum Board* — (As an alternate to Item 4) — 5/8 in. thick gypsum panels, with beveled, square, or tapered edges, applied either horizontally or vertically. Gypsum panels fastened to framing with 1-1/4 in. long Type W coarse thread gypsum panel steel screws spaced a maximum 10 in. OC with the last two screws 4 and 1 in. from the edges of the board. When used in widths other than 48 in., gypsum panels are to be installed horizontally.

CERTAINTEEED GYPSUM INC — Type LGFC6A (finish rating 21 min), Type LGFC2A, Type LGFC-C/A, Type LGFC-WD, Type LGLLX

4L. Gypsum Board* — (As an alternate to Item 4) — 5/8 in. thick gypsum panels, with beveled, square, or tapered edges, applied either horizontally or vertically. Gypsum panels fastened to framing with 1-1/4 in. long Type W coarse thread gypsum panel steel screws spaced a max 8 in. OC, with last screw 1 in. from edge of board. When used in widths of other than 48 in., gypsum boards are to be installed horizontally.

AMERICAN GYPSUM CO — Types AGX-1, M-Glass, AG-C, LightRoc.

NATIONAL GYPSUM CO — Type FSK, Type FSK-G, Type FSW, Type FSW-3, Type FSW-5, Type FSW-G, Type FSK-C, Type FSW-C, Type FSMR-C, Type FSW-6, Type FSL

5. Joint Compound — (Not Shown) Joints covered with one layer of tape and two coats of joint compound. Fastener heads covered with two coats of joint compound.

6. Batts and Blankets* — (Optional, Not Shown) Glass fiber or mineral wool insulation. Placed to completely or partially fill the stud cavities.

JOHNS MANVILLE

KNAUF INSULATION LLC

MANSON INSULATION INC

OWENS CORNING

ROCKWOOL — Type AFB, min. density 1.69 pcf / 27.0 kg/m³.

ROCKWOOL MALAYSIA SDN BHD — Type Acoustical Fire Batts

ROCK WOOL MANUFACTURING CO — Type Delta Board

6A. **Glass Fiber Insulation*** — (As an alternate to Item 5) — 3 in. thick glass fiber batts bearing the UL Classification Marking as to Surface Burning and/or Fire Resistance, placed to fill the interior of the wall, attached to the 4 in. face of the studs with staples placed 24 in. OC. See **Batts and Blankets** (BKNV or BZJZ) Categories for names of Classified companies.

*** Indicates such products shall bear the UL or cUL Certification Mark for jurisdictions employing the UL or cUL Certification (such as Canada), respectively.**

Last Updated on 2020-10-07

La presencia del nombre de una empresa o producto en esta base de datos no garantiza por sí misma que los productos así identificados hayan sido fabricados bajo el servicio de seguimiento de UL. Solo aquellos productos que lleven la marca UL deben considerarse como certificados y garantizados bajo el servicio de seguimiento de UL. Busque siempre la marca en el producto.

UL permite la reproducción del material contenido en el directorio de certificación en línea sujeta a las siguientes condiciones: 1. La información de la guía, las ensamblajes, las construcciones, los diseños, los sistemas y/o certificaciones (archivos) deben presentarse en su totalidad y de forma no engañosa, sin ninguna manipulación en los datos (o dibujos). 2. Debe aparecer la declaración "Reimpreso desde el directorio de certificaciones en línea con permiso de UL" junto al material extraído. Además, el material reimpreso debe incluir una nota de derechos de autor en el siguiente formato: "© 2021 UL LLC"