

BXUV.U329 - Fire-resistance Ratings - ANSI/UL 263

**Drywall Solutions**

Design/System/Construction/Assembly Usage Disclaimer

- Authorities Having Jurisdiction should be consulted in all cases as to the particular requirements covering the installation and use of UL Certified products, equipment, system, devices, and materials.
- Authorities Having Jurisdiction should be consulted before construction.
- Fire resistance assemblies and products are developed by the design submitter and have been investigated by UL for compliance with applicable requirements. The published information cannot always address every construction nuance encountered in the field.
- When field issues arise, it is recommended the first contact for assistance be the technical service staff provided by the product manufacturer noted for the design. Users of fire resistance assemblies are advised to consult the general Guide Information for each product category and each group of assemblies. The Guide Information includes specifics concerning alternate materials and alternate methods of construction.
- Only products which bear UL's Mark are considered Certified.

BXUV - Fire Resistance Ratings - ANSI/UL 263 Certified for United States

BXUV7 - Fire Resistance Ratings - CAN/ULC-S101 Certified for Canada

[See General Information for Fire-resistance Ratings - ANSI/UL 263 Certified for United States Design Criteria and Allowable Variances](#)

[See General Information for Fire Resistance Ratings - CAN/ULC-S101 Certified for Canada Design Criteria and Allowable Variances](#)

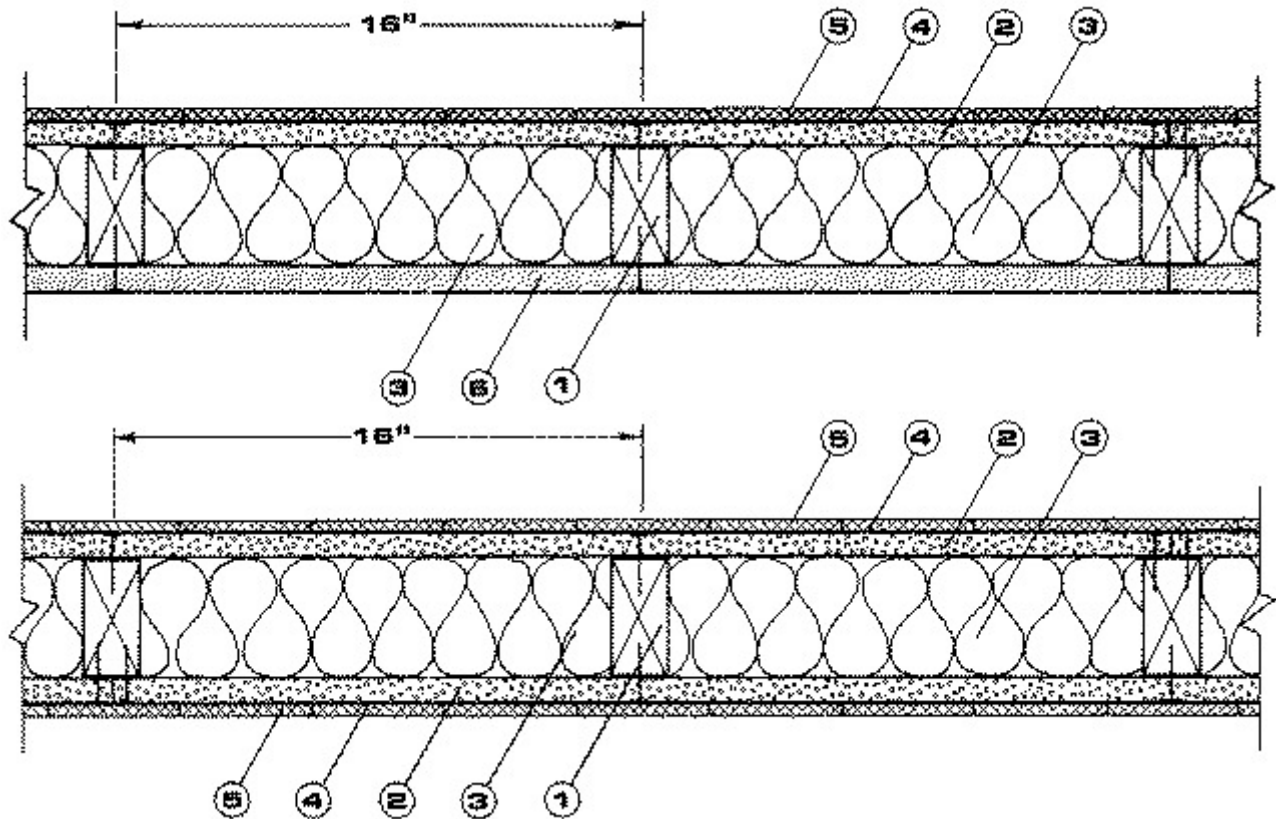
Design No. U329

October 06, 2020

Bearing Wall Rating — 1 HR.**Finish Rating — (See Items 2, 6 and 6A)**

This design was evaluated using a load design method other than the Limit States Design Method (e.g., Working Stress Design Method). For jurisdictions employing the Limit States Design Method, such as Canada, a load restriction factor shall be used — See Guide [BXUV](#) or [BXUV7](#)

*** Indicates such products shall bear the UL or cUL Certification Mark for jurisdictions employing the UL or cUL Certification (such as Canada), respectively.**



1. **Wood Studs** — Nominal 2 in. x 4 in., spaced 16 in. OC.

2. **Cementitious Backer Units*** — 1/2 or 5/8 in. thick, installed vertically or horizontally with vertical joints centered over studs. Fastened to studs and plates with corrosion resistant 1-5/8 in. long chamfered, ribbed wafer head screws with a minimum head diameter of .400 inch or 1-3/4 in. long hot-dipped galvanized roofing nails spaced 8 in. OC. Joints covered with glass fiber mesh tape and latex modified portland cement mortar or basecoat, or Type I organic adhesive. Finish rating 19 minutes for cement board with 1/4 in. thick tile set in latex modified portland cement mortar.

UNITED STATES GYPSUM CO — Type DCB.

USG MEXICO S A DE C V — Type DCB.

3. **Batts and Blankets*** — Min 3-1/2 in. thick mineral wool batts, friction fit between studs to fill interior stud cavity.

INDUSTRIAL INSULATION GROUP L L C — Type SAFB

JOHNS MANVILLE — Type SAFB

ROCKWOOL — Type AFB, min. density 1.8 pcf / 28.8 kg/m³

THERMAFIBER INC — Type SAFB

4. **Bond Coat for Setting Tile** — Latex modified portland cement mortar or Type I organic adhesive applied with a notched trowel.

5. **Ceramic Tile** — 1/4 in. thick, joints filled with grout.

6. **Gypsum Board*** — 5/8 in. thick, with square or tapered edges, applied vertically or horizontally with vertical joints centered over studs. Fastened to studs and plates 7 in. OC with 1-7/8 in. long 6d cement coated nails or 1-7/8 in. long Type

W or S screws. When used in widths other than 48 in., gypsum board to be installed horizontally.

AMERICAN GYPSUM CO — Types AGX-1, M-Glass, AG-C, LightRoc

BEIJING NEW BUILDING MATERIALS PUBLIC LTD CO — Type DBX-1

CABOT MANUFACTURING ULC — Type X, 5/8 Type X, Type Blueglass Exterior Sheathing

CERTAINTED GYPSUM INC — Types EGRG, GlasRoc, GlasRoc-2, or Type C

CGC INC — Type AR (Finish rating 26 min), Type C (Finish rating 26 min), Type IP-X1 (Finish rating 26 min), Type IP-X2 (Finish rating 26 min), Type SCX (Finish rating 26 min), Type WRC (Finish rating 26 min), Type IP-AR (finish rating 26 min), Type IPC-AR (finish rating 26 min), Type ULIX (finish rating 20 min), Type ULX (finish rating 22 min).

CERTAINTED GYPSUM INC — Types LGFC6A (finish rating 34 min), LGFC2A, LGFC-C/A, LGFC-WD, LGLLX, CLLX.

GEORGIA-PACIFIC GYPSUM L L C — Types 5, 6, 9, C, DA, DAP, DAPC, DGG, DS, GPFS6, Type X, Veneer Plaster Base - Type X, Water Rated - Type X, Sheathing - Type X, Soffit - Type X, TG-C, GreenGlass Type X, Type LWX, Veneer Plaster Base-Type LWX, Water Rated-Type LWX, Sheathing Type-LWX, Soffit-Type LWX, Type DGLW, Water Rated-Type DGLW, Sheathing Type- DGLW, Soffit-Type DGLW, Type LW2X, Veneer Plaster Base - Type LW2X, Water Rated - Type LW2X, Sheathing - Type LW2X, Soffit - Type LW2X, Type DGL2W, Water Rated - Type DGL2W, Sheathing - Type DGL2W.

NATIONAL GYPSUM CO — Types FSK, FSMR-C, FSW, FSW-3, FSW-6, FSW-8, FSL, RSX.

PABCO BUILDING PRODUCTS L L C, DBA PABCO GYPSUM — Types C, PG-9, PG-11, PG-C, PGS-WRS, PGI

PANEL REY S A — Type PRX2

SIAM GYPSUM INDUSTRY (SARABURI) CO LTD — Type EX-1 (finish rating 26 min)

THAI GYPSUM PRODUCTS PCL — Type C

UNITED STATES GYPSUM CO — Type AR (Finish rating 26 min), Type C (Finish rating 26 min), Type FRX-G (Finish rating 29 min), Type IP-AR (finish rating 26 min), Type IP-X1 (Finish rating 26 min), Type IP-X2 (Finish rating 26 min), Type IPC-AR (finish rating 26 min), Type SCX (Finish rating 26 min), Type ULIX (finish rating 20 min), Type ULX (finish rating 22 min), Type WRC (Finish rating 26 min).

USG BORAL DRYWALL SFZ LLC — Types C, SCX

USG BORAL DRYWALL SFZ LLC — Type USGX

USG MEXICO S A DE C V — Type AR (finish rating 26 min), Type SCX (finish rating 26 min), Type C (finish rating 26 min), Type WRC (finish rating 26 min), Type IP-X1 (finish rating 26 min), Type IP-X2 (finish rating 26 min), Type IP-AR (finish rating 26 min), Type IPC-AR (finish rating 26 min), Type ULX (finish rating 22 min).

6A. Gypsum Board* — As an alternate to Item 6 - (not shown) - 5/8 in. thick gypsum panels, with beveled, square, or tapered edges, applied either horizontally or vertically. Gypsum panels fastened to framing with 1-1/4 in. long Type W coarse thread gypsum panel steel screws spaced a max 8 in. OC, with last screw 1 in. from edge of board. When used in widths of other than 48 in., gypsum boards are to be installed horizontally.

AMERICAN GYPSUM CO — Types AGX-1, M-Glass, AG-C (Finished Rating is 25 minutes), LightRoc.

CABOT MANUFACTURING ULC — Type X

CERTAINTED GYPSUM INC — Type C, or Type X (Finished Rating is 23 minutes).

CGC INC — Type AR, Type C, Type IP-X1, Type IP-X2, Type SCX, Type WRC, Type IP-AR, Type IPC-AR, Type ULX. (Finished Rating is 24 minutes).

NATIONAL GYPSUM CO — Type FSK, Type FSK-G, Type FSW, Type FSW-3, Type FSW-5, Type FSW-G, Type FSK-C, Type FSW-C, Type FSMR-C, Type FSW-6, Type FSL

THAI GYPSUM PRODUCTS PCL — Type C or Type X

UNITED STATES GYPSUM CO — Type AR, Type C, Type FRX-G, Type IP-AR, Type IPC-AR, Type IP-X1, Type IP-X2, Type SCX, Type ULX, Type WRC. (Finished Rating is 24 minutes).

USG BORAL DRYWALL SFZ LLC — Types C, SCX

USG MEXICO S A DE C V — Type AR, Type SCX, Type ULX, Type C, Type WRC, Type IP-X1, Type IP-X2, Type IP-AR, Type IPC-AR. (Finished Rating is 24 minutes).

6B. **Gypsum Board*** — (As an alternate to Items 6 and 6A) - 5/8 in. glass-mat faced with square edges, applied either horizontally or vertically. Gypsum panels nailed 7 in. OC around the perimeter and in the field with 6d cement coated nails 1-7/8 in. long, 0.0915 in. shank diam and 15/64 in. diam heads. Nails shall be placed 1 inch and 3 inch from horizontal joints and 7 inch OC thereafter.

CGC INC — Type USGX

UNITED STATES GYPSUM CO — Type USGX

USG BORAL DRYWALL SFZ LLC — Type USGX

USG MEXICO S A DE C V — Type USGX

6C. **Gypsum Board*** — (As an alternate to Items 6 through 6B) - 5/8 in. thick, 4 ft. wide, paper surfaced applied vertically and secured as described in Item 6.

GEORGIA-PACIFIC GYPSUM L L C — Type X ComfortGuard Sound Deadening Gypsum Board (finish rating 27 min).

6D. **Gypsum Board*** — (As an alternate to Items 6 through 6C) — Nominal 5/8 in. thick, 4 ft wide panels, applied vertically and secured as described in Item 6.

PABCO BUILDING PRODUCTS L L C, DBA PABCO GYPSUM — Type QuietRock ES.

6E. **Gypsum Board*** — (As an alternate to Items 6 through 6D) - 5/8 in. thick, 4 ft. wide, paper surfaced applied vertically or horizontally and secured as described in Item 6 or 6A.

CERTAINTED GYPSUM INC — Type SilentFX

6F. Gypsum Board* — (As an alternate to Item 6) — 5/8 in. thick, 4 ft. wide, applied vertically with vertical joints centered over studs and staggered one stud cavity on opposite sides of studs. Secured as described in Item 6.

CERTAINTED GYPSUM INC — 5/8" Easi-Lite Type X

THAI GYPSUM PRODUCTS PCL — Type X

6G. Wall and Partition Facings and Accessories* — (As an alternate to Item 6) — Nominal 5/8 in. thick, 4 ft wide panels, applied vertically and secured as described in Item 6.

PABCO BUILDING PRODUCTS L L C, DBA PABCO GYPSUM — Type QuietRock 527

6H. Gypsum Board* — (As an alternate to 5/8 in. Type FSW in Item 6) - 2 layers nom. 5/16 in. thick gypsum panels applied vertically or horizontally. Horizontal joints on the same side need not be staggered. Inner layer attached with fasteners, as described in item 6, spaced 24 in. OC. Outer layer attached per Item 6.

NATIONAL GYPSUM CO — Type FSW

6I. Gypsum Board* — (As an alternate to Items 6 through 6H) — Nominal 5/8 in. thick, 4 ft wide panels, applied vertically only and secured as described in Item 6.

NATIONAL GYPSUM CO — Type SBWB

6J. Gypsum Board* — (As an alternate to Item 6) — 5/8 in. thick gypsum panels, with beveled, square, or tapered edges, applied either horizontally or vertically. Gypsum panels fastened to framing with 1-1/4 in. long Type W coarse thread gypsum panel steel screws spaced a maximum 10 in. OC with the last two screws 4 and 1 in. from the edges of the board. When used in widths other than 48 in., gypsum panels are to be installed horizontally.

CERTAINTED GYPSUM INC — Type LGFC6A (finish rating 21 min), Type LGFC2A, Type LGFC-C/A, Type LGFC-WD, Type LGLLX

7. Joints — (Not Shown) — Exposed joints covered with joint compound and paper tape. Joint compound and paper tape may be omitted when square edge boards are used. As an alternate, nom 3/32 in. thick gypsum veneer plaster may be applied to the entire surface of Classified veneer baseboard with the joints reinforced with paper tape.

8. Vapor Retarder, Water Barrier or Weather Resistive Barrier — (Optional, not shown) — As required.

*** Indicates such products shall bear the UL or cUL Certification Mark for jurisdictions employing the UL or cUL Certification (such as Canada), respectively.**

Last Updated on 2020-10-06

La presencia del nombre de una empresa o producto en esta base de datos no garantiza por sí misma que los productos así identificados hayan sido fabricados bajo el servicio de seguimiento de UL. Solo aquellos productos que lleven la marca UL deben considerarse como certificados y garantizados bajo el servicio de seguimiento de UL. Busque siempre la marca en el producto.

UL permite la reproducción del material contenido en el directorio de certificación en línea sujeta a las siguientes condiciones: 1. La información de la guía, las ensamblajes, las construcciones, los diseños, los sistemas y/o certificaciones (archivos) deben presentarse en su totalidad y de forma no engañosa, sin ninguna manipulación en los datos (o dibujos). 2. Debe aparecer la declaración "Reimpreso desde el directorio de certificaciones en línea con permiso de UL" junto al material extraído. Además, el material reimpreso debe incluir una nota de derechos de autor en el siguiente formato: "© 2021 UL LLC"