

BXUV.N501 - Fire-resistance Ratings - ANSI/UL 263



Design/System/Construction/Assembly Usage Disclaimer

- Authorities Having Jurisdiction should be consulted in all cases as to the particular requirements covering the installation and use of UL Certified products, equipment, system, devices, and materials.
- Authorities Having Jurisdiction should be consulted before construction.
- Fire resistance assemblies and products are developed by the design submitter and have been investigated by UL for compliance with applicable requirements. The published information cannot always address every construction nuance encountered in the field.
- When field issues arise, it is recommended the first contact for assistance be the technical service staff provided by the product manufacturer noted for the design. Users of fire resistance assemblies are advised to consult the general Guide Information for each product category and each group of assemblies. The Guide Information includes specifics concerning alternate materials and alternate methods of construction.
- Only products which bear UL's Mark are considered Certified.

BXUV - Fire Resistance Ratings - ANSI/UL 263 Certified for United States

BXUV7 - Fire Resistance Ratings - CAN/ULC-S101 Certified for Canada

See General Information for Fire-resistance Ratings - ANSI/UL 263 Certified for United States Design Criteria and Allowable Variances

See General Information for Fire Resistance Ratings - CAN/ULC-S101 Certified for Canada Design Criteria and Allowable Variances

Design No. N501

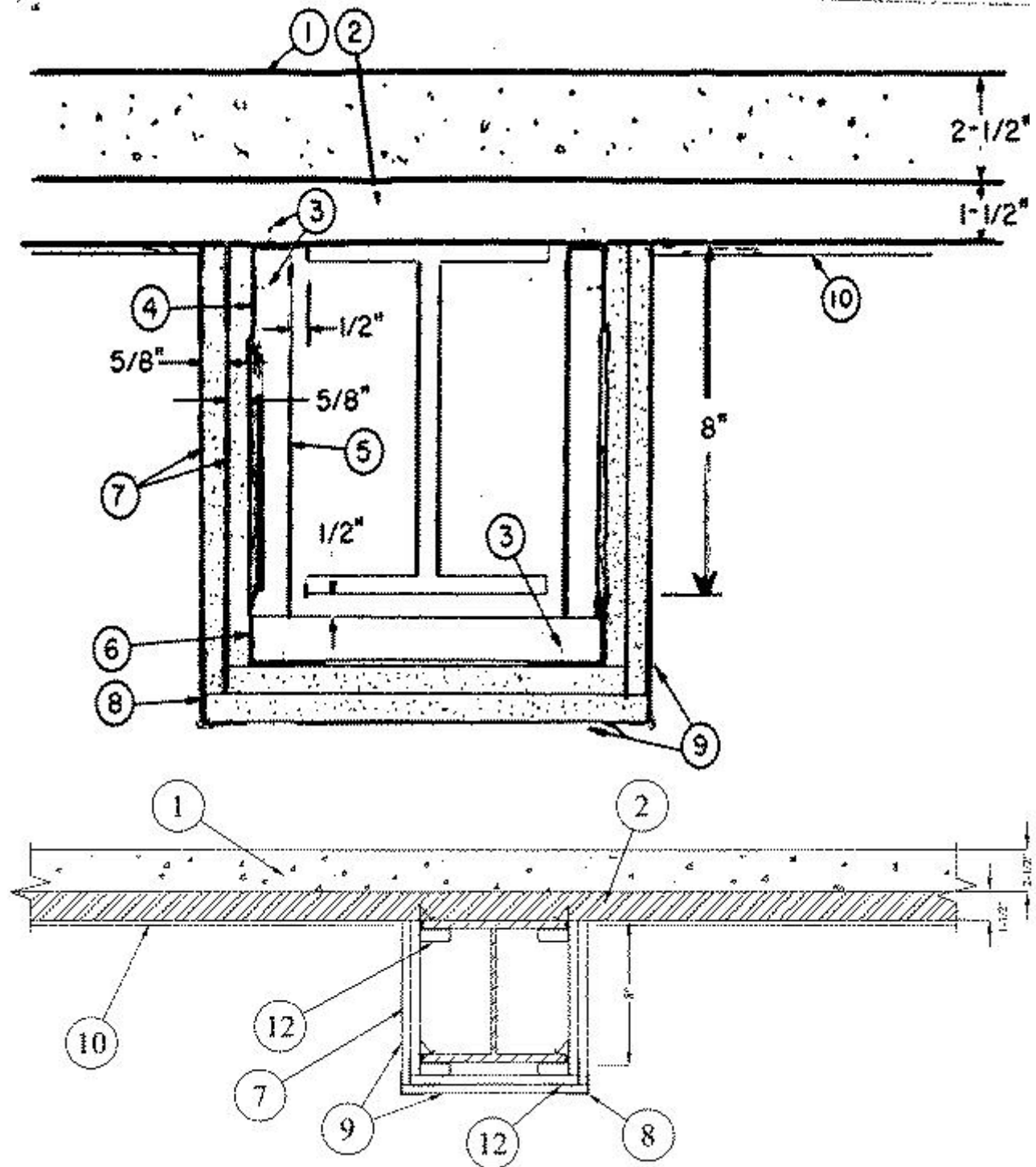
October 06, 2020

Restrained Beam Rating — 2 Hr.

Unrestrained Beam Rating — 2 Hr.

This design was evaluated using a load design method other than the Limit States Design Method (e.g., Working Stress Design Method). For jurisdictions employing the Limit States Design Method, such as Canada, a load restriction factor shall be used — See Guide BXUV or BXUV7

*** Indicates such products shall bear the UL or cUL Certification Mark for jurisdictions employing the UL or cUL Certification (such as Canada), respectively.**



Steel Beam — Min size, a W8X24 with outside dimensions of 7-7/8x6-1/2 in. with a flange thickness of 3/8 in., a web thickness of 1/4 in., and a cross-sectional area of 7.06 sq in.

1. **Normal Weight Concrete** — 148 pcf.

2. **Steel Floor and Form Units*** — 1-1/2 in. fluted type, welded to beam.

3. **Drill Screw** — No. 8-18 by 1/2-in. long Phillips panhead drill screws, self-drilling and self-tapping, made of case-hardened steel.

4. **Runner Angle** — 24 MSG galv steel with 1 and 2-in. legs. Fastened to steel deck 12 in. O.C. with Item 3.

5. **Channel Bracket** — Fabricated from 25 MSG galv steel, 1-11/16 in. deep with 1-in. legs and spaced 24 in. O.C. Fastened to the runner angles with Item 3.

6. Corner Angle — Same material as Item 4, fastened to channel brackets with Item 3.

7. Gypsum Board* — 5/8 in. thick. First layer fastened with 1-1/4 in. long, 0.150 in. diam screws spaced 16 in. O.C. Second layer attached with 1-3/4 in. long, 0.150 in. diam screws spaced 8 in. O.C. Screws are self-drilling and self-tapping Phillips head made of case-hardened steel.

AMERICAN GYPSUM CO — Types AGX-1, AG-C, LightRoc.

BEIJING NEW BUILDING MATERIALS PUBLIC LTD CO — Type DBX-1.

CABOT MANUFACTURING ULC — Type X, 5/8 Type X, Type Blueglass Exterior Sheathing

CERTAINTED GYPSUM INC — Types EGRG, GlasRoc, GlasRoc-2, Type C, Type X, Type X-1, Easi-Lite Type X-2.

CGC INC — Type C, IP-X1, IP-X2, IPC-AR, SCX, SHX, WRX, ULIX.

CERTAINTED GYPSUM INC — Types LGFC6A, LGFC-C/A.

GEORGIA-PACIFIC GYPSUM L L C — Types 5, C, DAP, DD, DA, DAPC, DGG, DS, GPFS1, GPFS6, TG-C, Type X, Veneer Plaster Base-Type X, Water Rated-Type X, Sheathing Type-X, Soffit-Type X, GreenGlass Type X, Type LWX, Veneer Plaster Base-Type LWX, Water Rated-Type LWX, Sheathing Type-LWX, Soffit-Type LWX, Type LW2X, Veneer Plaster Base - Type LW2X, Water Rated - Type LW2X, Sheathing - Type LW2X, Soffit - Type LW2X.

NATIONAL GYPSUM CO — Types FSK, FSK-C, FSK-G, FSL, FSMR-C, FSW, FSW-C, FSW-G, FSW-3, FSW-6, FSW-8.

NATIONAL GYPSUM CO — Riyadh, Saudi Arabia — Type FR, or WR.

PABCO BUILDING PRODUCTS L L C, DBA PABCO GYPSUM — Types C, PG-3, PG-9, PG-11, PG-C, PGS-WRS or PGI.

PANEL REY S A — Type PRC

SIAM GYPSUM INDUSTRY (SARABURI) CO LTD — Type EX-1

THAI GYPSUM PRODUCTS PCL — Type C, Type X.

THE SIAM GYPSUM INDUSTRY (SONGKHLA) CO — Types C and SCX

UNITED STATES GYPSUM CO — Types C, IP-X1, IP-X2, IPC-AR, SCX, SHX, WRX, ULIX.

USG BORAL DRYWALL SFZ LLC — Types C, SCX

USG MEXICO S A DE C V — Types C, IP-X1, IP-X2, IPC-AR, SCX, SHX, WRX.

8. Corner Bead — Fabricated from 20 MSG galv steel to form an angle with 1-1/4 in. legs. Legs perforated with 1/4 in. diam holes approx 1 in. OC. Attached to wallboard with special crimping tool approx 6 in. OC. As an alternate, the bead may be nailed to the wallboard.

9. **Joint Compound** — 1/32 in. thick on bottom and sides of wallboard from corner beads and feathered out. Paper tape embedded in joint compound over joints with edges of compound feathered out.

10. **Protective Material — Spray-Applied Fire Resistive Materials*** — Spray applied to the underside of the steel floor units, filling the flutes of the units and providing a smooth ceiling which was 1/4 in. thick as measured from the bottom plane of the floor units.

See Spray-Applied Fire Resistive Materials (CHPX) category for names of manufacturers.

11. **Alternate Joint System** — (Not Shown) — For lath only. A 1/16 in. thickness of gypsum plaster applied to entire exposed surface over either paper tape on joints embedded in cementitious compound or 2 1/2 in. wide glass fiber tape stapled 8 in. OC on joints.

12. **Alternate Construction - Steel Framing Members*** — As an alternate to Items 3, 4, 5 and 6 steel clips attached to both sides of beam flanges 2 ft OC and at ends of beam. First layer of gypsum board fastened to steel clips with 1-1/4 in. long Type S drywall screws. 2 in. by 2 in. 25 MSG angle fastened to clips on bottom portion of assembly with 2 in. long Type S drywall screws. Second layer of gypsum board fastened to angle and steel clips with 2 in. long Type S drywall screws, spaced 2 ft OC. Screws are self-drilling and self-tapping Phillips head made of case-hardened steel.

JOHN WAGNER ASSOCIATES INC, DBA GRABBER — Type CB Clip.

*** Indicates such products shall bear the UL or cUL Certification Mark for jurisdictions employing the UL or cUL Certification (such as Canada), respectively.**

Last Updated on 2020-10-06

La presencia del nombre de una empresa o producto en esta base de datos no garantiza por sí misma que los productos así identificados hayan sido fabricados bajo el servicio de seguimiento de UL. Solo aquellos productos que lleven la marca UL deben considerarse como certificados y garantizados bajo el servicio de seguimiento de UL. Busque siempre la marca en el producto.

UL permite la reproducción del material contenido en el directorio de certificación en línea sujeta a las siguientes condiciones: 1. La información de la guía, las ensamblajes, las construcciones, los diseños, los sistemas y/o certificaciones (archivos) deben presentarse en su totalidad y de forma no engañosa, sin ninguna manipulación en los datos (o dibujos). 2. Debe aparecer la declaración "Reimpreso desde el directorio de certificaciones en línea con permiso de UL" junto al material extraído. Además, el material reimpreso debe incluir una nota de derechos de autor en el siguiente formato: "© 2021 UL LLC"